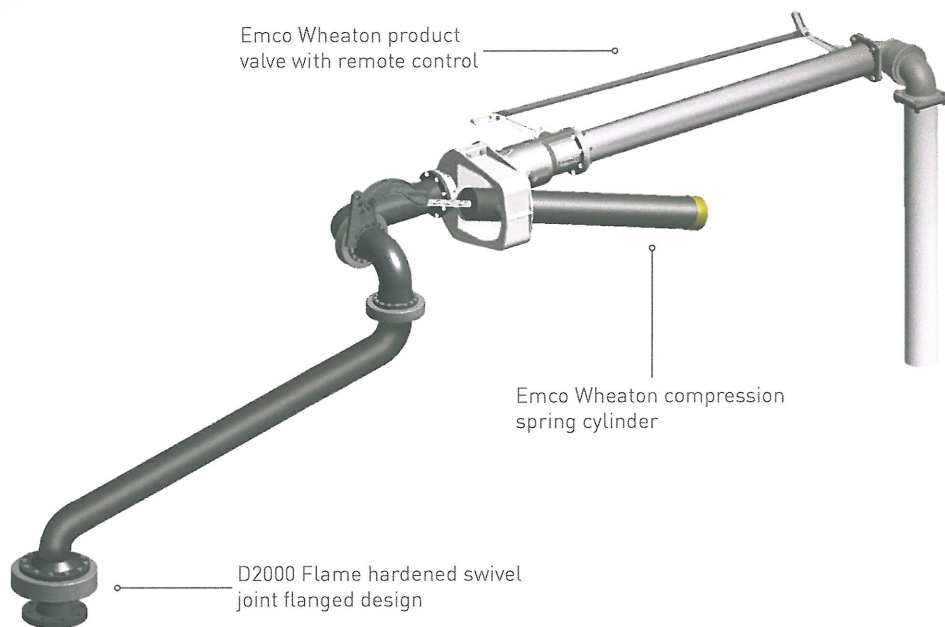


EB2800

Top Loading Long Reach

Value Added Loading Arm Systems for Road and Rail



Designed for the top loading of road or rail tankers using a manhole, this type of loading arm is suitable for applications where the manhole cannot be accurately positioned and a long reach is required.

It has the further advantage of robust, high quality swivel joints and precise balancing for easier handling.

Size: 3"/4" DN80 / 100

Right hand design / left hand design

Product entry from below or top / Balanced by spring cylinder

Design pressure: 16 bar up to the flange

Design temperature: -40° - 50°C

Product: oil products

MATERIALS:

- Inlet flanges - C 22.8 / ASTM A 105
- Pipes, elbows at Inlet - Carbon steel Cast EN-GJS-350-22
- Swivel joint Bearing module - 42CrMo4 / Aluminium
- Swivel joint seals - Viton
- Cylinder Bracket - G-AlSi7Mg0,3
- Loading valve - G-AlSi7Mg0,3
- A-length / drop tube / swivel joint - AIMGSi 1 F32

DIMENSIONS:

- F = 1.200 - 2.500 mm
- A = 1.200 - 3.000 mm
- B = 1.000 - 3.000 mm

CONNECTIONS:

- 3" - 4" Inlet flange to ASA 150 LB R / EN 1092

PAINTING:

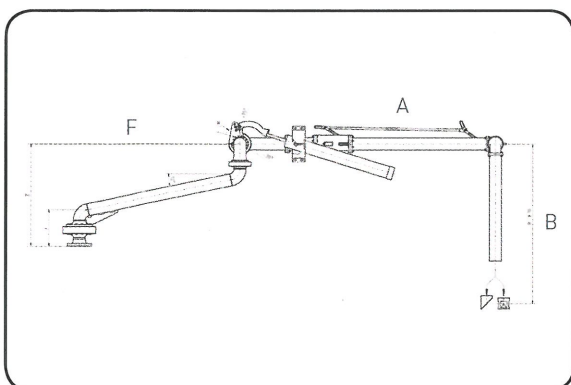
- One coat of EMCO standard Primer on all external carbon steel parts, 40 µm
- Others available on request

COMPONENTS:

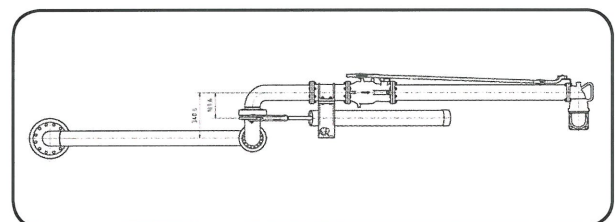
- 3 off D2000 carbon steel swivel joints, internally flanged, sealing surfaces are micro finished, flame hardened ball raceway
- 1 off ali swivel joint, internally flanged
- Spring cylinder for balancing of up and down movement
- Loading valve hold open with Remote control
- Vent valve on top of the loading valve
- Drop pipe with 45° outlet, alternative T-deflector
- Others available on request

STANDARD DOCUMENTATION:

- Envelope drawing
- Loading arm drawing and parts list
- Standard Installation, Operation and Maintenance Manual
- Certificate of conformity
- Others available on request



Plan view



Top view