

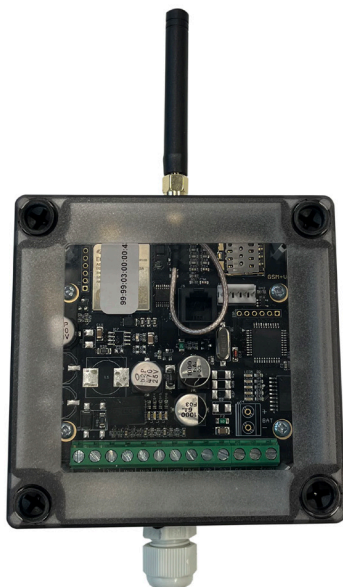
SMS-Alarm 4G

CONTENTS:

Installation	2
Concise information	2
Indication of status	2
Connection	3
SMS commands	4
Example	4

Edition 1.0 - 24-02-21

***Save this manual for
future reference!***



Afriso Ema AB

Kilvägen 2 • SE-232 37 Arlöv
Sweden

+46-(0)40-92 20 50

www.afriso.se



Installation

Concise information

Normally, all settings of the device are made via the website, ses-access.se. Some settings can also be made via SMS commands. It is therefore important that the password is changed, even if the device will only be managed via the web page. See the chapter SMS commands.

Note that the SIM card must not have a PIN code. As this is normally activated when the card is delivered, it must be removed before inserting the SIM card into the device.

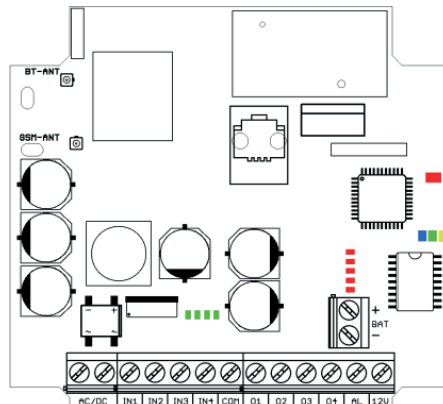
Once the settings have been changed via the web page, it is possible to force the device to connect to the server with the SMS command CONNECT. See the chapter SMS commands.

Indication of status

The status of inputs is indicated by green LEDs above the terminal block for the inputs. The status of outputs is indicated by red LEDs above the terminal block marked BAT. The top LED corresponds to output 1 and the bottom output ALARM.

Note that the LED for the corresponding input lights up when the input is closed to COM, regardless of whether it is configured as NO or NC.

LED	Function steady light	Function flashing
Blue	Connection to the server active	Signal strength 1-5 blinks
Green	SMS received (solid light for 5 sec.)	Network type, 1 blink=LTE, 2 blinks=GSM
Yellow	Sending SMS / Dialed alarm in progress	
Red	Corrupt configuration	Incorrect function, see table



Blink	Error description
1	Low signal strength
2	Error on SIM card or SIM card protected by code
3	No network
4	LTE modem error (not initialized)
5	Card for extended I/O missing/no contact
6	No connection with the server
10	Unknown internal error. Restart the device

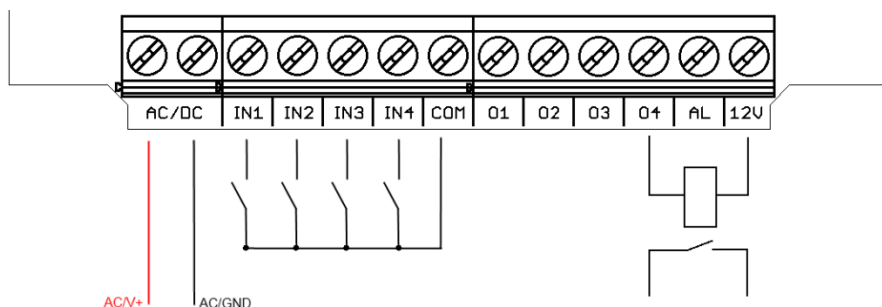
Connection

- 12VDC +/-20%,

The supply voltage must be connected to the terminals marked +/-.

The inputs are active low and require a potential-free connection to COM. Setting the time delay and NO/NC is done via the web page.

The outputs are closed to COM when switched on. In the model with 12V supply, COM and the supply voltage V- are interconnected and can be used as a common reference. For potential-free connection, an intermediate relay is required, which is then connected between +12V and the output.



SMS commands

Monitoring and control of the device is primarily intended to be done via the web page, but it is also possible to manage certain functions via SMS.

A command SMS is made up of 4 parts as follows:

[password] [command] [parameter 1] [parameter 2]

Parameters 1 & 2 are not used by all commands. Command SMS can be written in both upper- and lower-case letters, even mixed. The device only responds when the password is approved. In the event of an incorrect password, no response is sent back.

The device only accepts commands that contain the correct password. As all devices have the same password from the factory, it is important to give the device a new password to prevent improper access. This password must be 1-8 characters long and may contain 0-9, a-z and A-Z. The factory default password is "0000"

Command	Parameter 1	Parameter 2	Function
STATUS	---	---	Begär status på I/O och signalstyrka
CHGPASS	New password	Repeat password	Change Password.
FACRESET		---	Reset the device to factory settings, except for ID
CONNECT	---	---	Connect to the server now
CONINTVL	Interval	---	Enter connection interval (in minutes), 0=never
OUTPUT	Output #	ON/OFF	Turn on/off output
SETOUT-PUT	Output #	ON/OFF	Turn output on/off, don't send replies back.
RESTART	GSM/ALL	---	Restart the modem (GSM) or the whole device (ALL)

Example

Change password from default to 1234: "0000 CHGPASS 1234 1234"

Turn on output 3 with the new password: "1234 OUTPUT 3 ON"

Request status: "1234 STATUS"

When commissioning for the first time, always start with the "STATUS" request.

**AFRISO****Afriso Ema AB**

Kilvägen 2 • SE-232 37 Arlöv • Sweden

Tel +46-(0)40-92 20 50

info@afriso.se • www.afriso.se